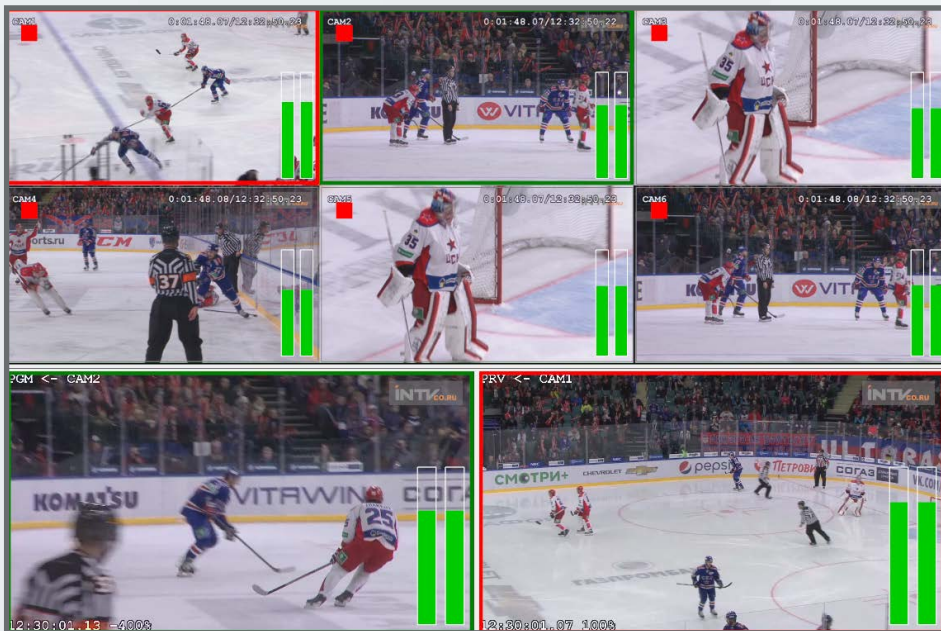


Meteora: multichannel video server for record and playback.
Meteora-Sport: Slow motion video server. Video referee server.

Live production server Meteora was created by INTV for On Air work as a multichannel ingest/playout and slow motion instant replay. Capable to use from 4 to 9 channels (depends on format and codec).

CAPABILITIES:

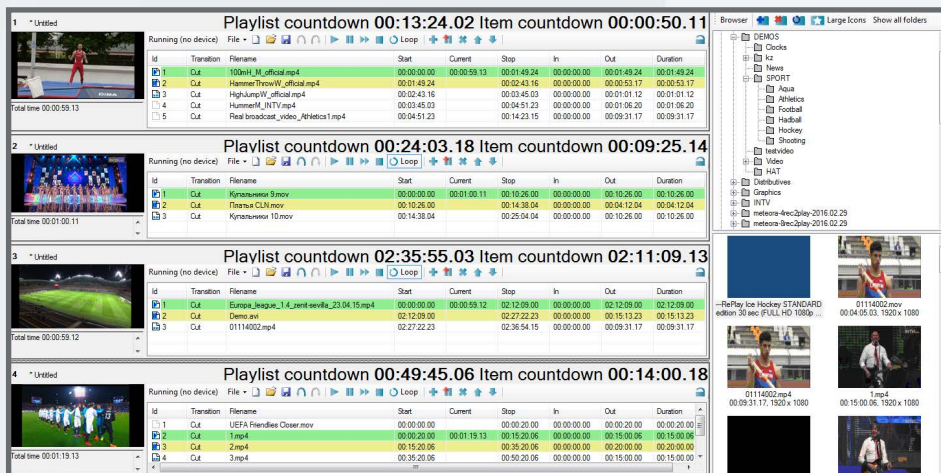


Slow Motion Playback

Slow playback of video content. Antialiasing and line interpolation option. High quality forward/reverse motion of the video. Super slow motion option.

Control

Jog shuttle and T-bar controller allows you to create clips and review captured material. Distant workplace by TCP/IP protocol connection.



Playlist

Creation of clips from capturing material and putting them into playlist. Trimming clips in playlist. Setting of the transition effects (cut, mix, wipe). Clip banks for created clips. Playback of prepared video material (in supported codecs).

Judgment data

Sport-Proxy-Log - additional software which collects data from arena scoring system and converts it to log files and metadata files that can be used in server Meteora.

Game time, score, period info can be mixed into video signal (used for video referring systems). Metadata ingest with keyword search will help to find clips and create playlists.

Compatible scoring systems:

- Araneus • Nautronic • Bodet • Dian
- NATA-Info • MTVisual • Stramatel • ESK • Swiss Timing • Lynx • ALGE-TIMING • MegaS • Favero • IWFTIS

Synchronization

Hardware-software option of reading input timecode signal-keeping the server clock from an external LTC source (LTC card required) or NTP protocol. Synchronous timing on the input video signal from Black Bursts PAL and TriLevel Sync.

Automation

Playback clips and playlists by external commands of automation systems (AVECO, Harris, PebbleBeach).

Analytics

A simple and easy to use 2D drawing touch screen to highlight important moments by analytics graphics with control of server playback.

Multiviewer

Hardware-software multiviewer preview of input video signals, fast navigation inside captured content. Marking clips to quick access for required moment. Indicators of sound, time marks and refereeing data at every moment of recorded material.

- **Express-Video** - Multichannel server software for playback clips from Playlist.
- **Meteora-Sport** - Slow motion video server software.

TECHNICAL SPECIFICATIONS:

System	Windows 7 Pro 64-bit Intel Core i7 16 Gb RAM PSU hot swap	Audio	Analog balanced Digital (embedded, AES) Stereo input-output 48 kHz, 24 bit
Video Interfaces	CVBS YUV SDI IP - SMPTE-2022-6	Synchronization	Black Burst PAL Tri-Level
Standards	625i50 720p50 1080i50 1080p25 1080p50/60 UHD-4K	Work mode	Fill/PGM Out «Transit» (with relay bypass)
Multiviewer	DVI HDMI D-Sub	Interfaces	GPI/Tally RS 232/422/485 Ethernet, LTC, NTP
		Codecs	H264, MPEG-2, Motion JPEG, Apple ProRes 4:2:2
		Dimensions	4RU 440 x 176 x 560, 20 kg Laptop, 8 kg

CONTACTS

INTV Co. Ltd

10-D Kamennostrovsky Prospect, 30-N, Saint-Petersburg, Russia, 197101.

Tel: +7 (812) 922-37-92. E-mail: info@intvco.ru. Web: www.intvco.com.