

INTV INNOVATIVE TELEVISION SYSTEMS

SERVICES

- rental of EVS, INTV and other companies equipment
- support by English speaking operators and engineers
- repair and upgrade of EVS equipment
- sale of new EVS equipment
- sale of exdemo EVS equipment
- transfer service for partner and logistic

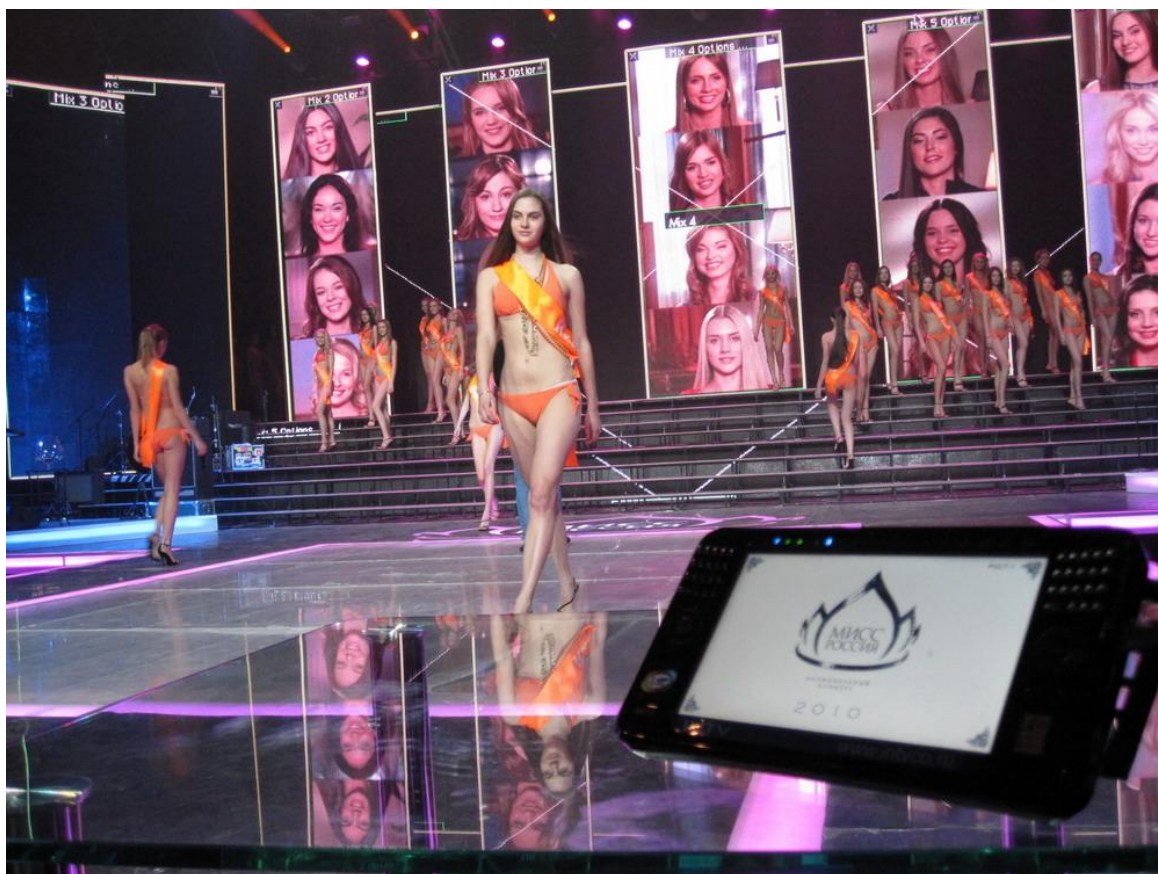


*Russia, Ukraine, Belorussia, Kazakhstan
2010*

1 LIST OF SERVICES

1. PRODUCTION OF TV PROGRAMS AND MAINTENANCE OF LIVE BROADCASTING
2. INTV TELEVISION GRAPHIC SERVICE
3. RENTAL OF CAMERAS AND LENSES
4. RENTAL OF EVS EQUIPMENT
5. REPAIR OF EVS EQUIPMENT
6. UPGRAPE OF OLD EVS EQUIPMENT
7. SALE OF EXDEMO EVS EQUIPMENT

2 PRODUCTION OF TV PROGRAMS AND MAINTENANCE OF LIVE BROADCASTING



Discussion and preliminary study of production workflow of TV programs recording and live broadcasting,
Organisation of works with subcontractors,
Collaboration with experienced directors from Russia, Europe and America,
Experience of work on big international events,
Use of newest television technologies:

- Multicamera mobile sets in SD/HD,
- videoservers EVS XT2 HD/SD,
- Super Slow Motion systems: CAMERA AND SERVER,
- HD/2K/4K systems (cameras, servers, NLEs and accessories) for recording and editing with support of 3D,
- fiber-optic systems of signal delivery,
- HD/SD graphic systems for sport programs and TV shows,

3 EVS EQUIPMENT

Videoserver EVS XT[2]: core of your tapeless production.

Famous all over the world EVS XT[2] videoserver allows you to record, edit and playout multiple channels with possibility to do it in sync. EVS XT[2] makes production fast, easy and accurate.

Developed specially for work in extreme and changeable conditions of sport production, EVS XT[2] became a standard in tapless systems of live broadcasting, time-delay and in transmission setups.

XT[2] records in a loop mode, allowing user to be sure that all the feeds will be recorded without losing even a single frame. Powerfull built-in SDTI hardware allows to connect servers in a single network, Gigabit connection can be used for integration with NLE stations, archive and automation systems.

Open architecture of XT[2] allows easily to upgrade and extend it's functionality keeping it up to date.

XT[2] supports multiple formats and codecs, such as Avid DNxHD®, Apple ProRes 422 and ProRes 422 HQ, allowing to integrate it in any studio infrastructure and transfer all the material extremely fast without any transcoding.



EVS Multicam LSM: live slow motion system

Multicam LSM is a set of equipment that includes videoserver XT[2] and legendary LSM controller, that allows you to make live replay of material in SD or HD. Multicam LSM includes slow motion and Super Motion modes and a full set of "on-air editing" functionality, that are used by broadcasters all over the world every day. Editing of clips and playlists, split screen, painting and target tracking are available as an options of Multicam LSM and can be easily enabled in your setup.



XNet[2] Hub

- XHub[2] is used for connection into a single XNet[2] high speed network multiple production and transmission EVS videoservers XT[2]/XS.
- XHub[2] allows to transfer files with speed of up to 1.5 Gb/sec and indicates status of any machine on the XNet[2].
- Operator of each EVS XT2/XS station has full control of all channels and material available in XNet[2].



XHub[2]

Station of archiving and streaming: EVS XF[2]

- Archiving, streaming and transcoding station based on EVS XF[2] or XStore hardware;
- Export of clips on external archives of AVID: SAN Storage Unity/ISIS and APPLE: SAN Storage XSan ,
- NLE stations AVID Media Composer + SAN Storage Unity/ISIS , Apple FCP + SAN Storage Xsan can be included into a package



Station of EVS videosevers mediacontent management: IP Director



- Compact, easy, reliable station [IP]Director, in 1RU PC;
- Can control channels and content of multiple production or transmission EVS videosevers XT[2]/XS;
- [IP]Director software package for live broadcasting, delayed broadcasting and any other studio production;
- One monitor and two monitors modes supported by application, allowing easily see and manage all the content;
- RS422 Gigabit Ethernet interfaces for control of any EVS XT/XS videosever.
- Built-in features of timeline editing and Voice Over.

4 GRAPHIC STATIONS AND DESIGN OF TV PROGRAMS

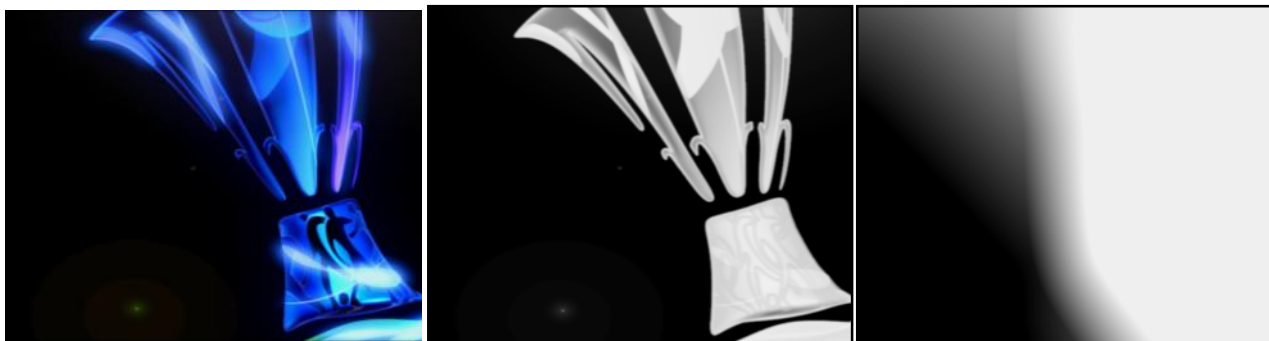
Graphic station for broadcasting and design "ATLAS-SPORT":

- Graphics and animation for live sport events;
- Database with all the participants of sport competition or contest;
- Visualisation and data exchange with referee systems of known manufacturers: Nautronic, Omega, ESK, Araneus/NATA-Info
- Timekeeping of match and timers of penalty time;
- Built-in DSK mixer (option);
- Storing of graphic transitions in TGA format with Alpha channel 4:4:4:4 Uncompressed;
- Technical support and operator work;
- Development of graphic design.



Generator-mixer of graphic transitions for slow motion "ARENA":

- Generator-mixer of graphic transitions "ARENA" :
- Standalone compact station (1RU, 4 kg); ;
- Record and transfer of information with Compact Flash card;
- Storing and playout of up to 16 video clips with Alpha channel in format 4:4:4:4 Uncompressed and total duration of 100 seconds;
- Audio in 48 kHz, 16 bit format;
- Controlling by external video mixer through GPI IN (TALLY) interface;
- Built-in multilayer DSK mixer (option);
- Built-in AB mixer with WIPE generator, for forming transition from program signal on signal of slow motion videosever.



5 CAMERAS AND LENSES

Wide range of studio and ENG cameras with accessories: accumulators, mobile sound and mobile lighting equipment, tripods and robotic pedestals, cranes with different length, teleprompters, flight cases and interface equipment for remote control.



Super Slow Motion and Hyper Motion cameras:

- shooting of fast changing scenes and events;
- format of many sport television programs demands Super SlowMotion;
- transfer of signal through triaxial cable and TCP/IP;
- CCU (Camera Control Unit);
- 3 SDI outputs for connection to Super SlowMotion server
- enses on demand;

Special plan sight cameras:

- Cameras for placing above/ behind the goal (hockey, football, handball), basket etc.;
- Minicameras with remote control – for placing in out-of-the-way places;
- MovieCam – robotized cameras with programmed motion path;
- SpiderCam - robotized cameras with programmed long and very long motion paths (flight) on ropes;
- SkyCam – cameras on gyroscopic platform, placed on aircrafts – helicopters, hang-gliders, airships etc.;
- RailCam – cameras on a high-speed platform, moving on railing;
- DiveCam – cameras for underwater shooting.



Full options RED ONE cameras:

- 11,4M resolution (4520x2540);
- Dynamic range > 66dB;
Format: HD 1080, 4K and 2K,
- Frame frequency ...120 per second ;
- Hard drive storage RED-DRIVE (320GB)
- RED-RAM, with capacity of 128 GB
- RAW format
- RED PRIME LENS Optics: 25mm, 35mm, 50mm, 85mm, 100mm, 300mm
- Engineer and operator,
- Cart and shareholder.



6 TRAININGS:

When shipping the equipment, before big events, or just on demand of a customer we make trainings with practical lessons in our Demo studios or on customer premises for engineers, operators and directors of EVS equipment. Groups of 4 persons during 3-4 days get intensive training and get professional knowledge from our trainers and directors, that have experience of working on huge events such as Olympic Games and different sport Championships. Effectiveness of running your expensive equipment is direct proportion to qualification and knowledge of engineers, directors and operators of your television or film company. We prepared about 200 specialists for sport and news broadcasting, teleshowes and film production



7 FEEDBACK OF OUR CUSTOMERS AND PARTNERS



Thank you for invaluable contribution to LTV channel development. We are looking forward to a productive cooperation in the future.

Edgars Kots , General Director of LTV, Latvijas Televizija



*We are very happy about our very good collaboration with you!
EVS will always be dedicated to bring innovative solutions to customers and to support our trustful and loyal partners like you.
I hope that we will see each other very soon.*

*Best regards,
Henry ALEXANDER | EVS General Manager EMEA*

For rental of the equipment and price information please call us!

Big discounts for continuous rental period (of more than 5 days).

Prices on rental of our equipment are specified without taking into account additional options and transportation costs. Engineers travel expenses are also not included.

Prices are specified without VAT.

8 CONTACTS

General Manager JSC "INTV"

Putilin Vitaly

Tel.: +7(812)922-37-92

Fax.: +7(812)326-83-74,

E-mail: v.putilin@intvco.ru

www.intvco.com